

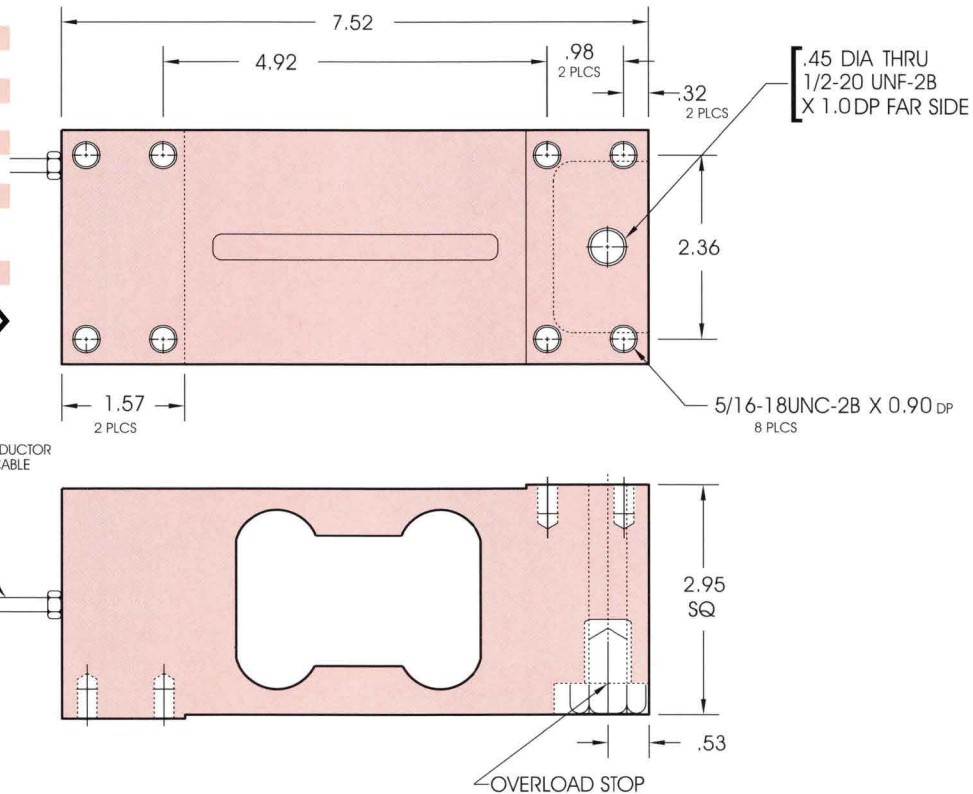
Model 60410



CAPACITY: 100-2K LBS

PERFORMANCE SPECIFICATIONS

Standard Capacities (lbs.):	100, 150, 200, 250, 500, 750, 1k, 1.5k, 2k
Excitation Voltage:	10VDC - Maximum 20VDC
Rated Output:	2.0 mV/V ± 10%
Non-Linearity:	< 0.02% FSD (Full Scale Output)
Hysteresis:	< 0.02% FSD
Non-Repeatability:	< 0.01% FSD
Zero Balance:	±10% FSD
Bridge Resistance:	
Input:	415 ohms ± 15 ohms
Output:	350 ohms ± 4 ohms
Safe Overload:	150% of Rated Capacity
Temperature:	
Compensated Range:	0 - 150 deg. F
Effect on Output:	< 0.0008% FSD/deg. F
Effect on Zero:	< 0.0011% FSD/deg. F
Finish:	Aluminum



ELECTRICAL TERMINATION

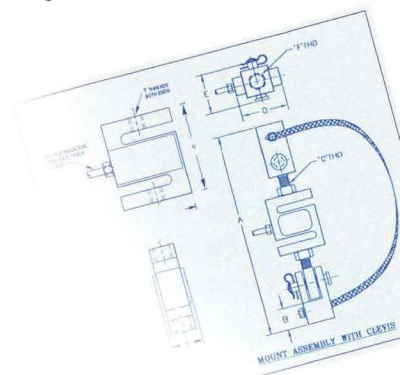
INPUT OUTPUT SHIELD
 RED (+) GREEN (+)
 BLACK (-) WHITE (-)

COMPRESSION POSITIVE

† Factory Mutual Systems approved as intrinsically safe when installed per F.M. approved installation drawing. Contact ARTECH sales department for details.

FEATURES:

- Capacity range 100-2K pounds
- Single-point platform support
- Anodized aluminum element
- Protective coating on gage area
- 0.02% total error
- Interchangeable with Tedea 1250 or Transducers 6762
- Factory Mutual (F.M.) Approved †



DESCRIPTION:

The Model 60410 single-point load cell requires a minimum of engineering design to incorporate it into a platform structure since it can be bolted directly to the weighing pan. Its resistance to off-center loading error allows the use of large weighing pans. It is an excellent choice for use in counting scales, bench scales and moderate capacity floor scales.

Represented by:

Scales & Weighing Solution Corp.
 45 Whitney Road Suite 9-11
 Mahwah, NJ 07430
 201-674-5761
<https://theloadcelldepot.com>

