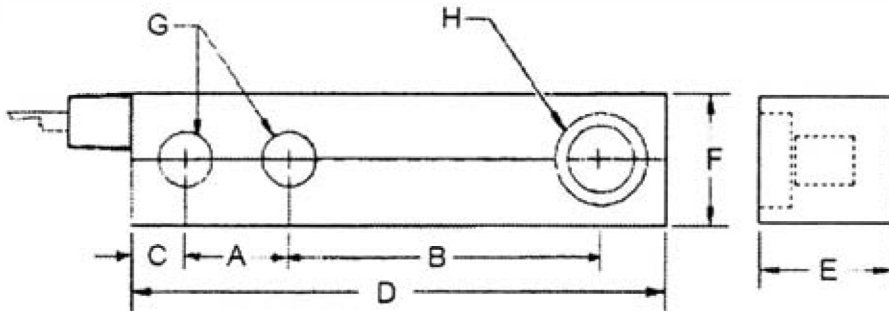


BEAM LOAD CELL

**ML 4437 ML4447 ML4449
& 13329000B 2,000 ohm design**



**Toledo Masstron
ML Model**



Part Number	Toledo®	Capacity	Weight	A	B	C	D	E	F	G	H
TBM4-35K	ML4437	35,000 lb	26 lb	3.50	6.25	125	12.50	2.75	2.75	1.31	1.50
TBM4-45	ML4447/49	45,000 lb	28 lb	3.50	6.25	125	12.50	2.75	2.75	1.31	1.50
TBM4-45*	13329000B	45,000 lb	28 lb	3.50	6.25	125	12.50	2.75	2.75	1.31	1.50
*2,000 ohm bridge											
Old style w/o step (w/o pistol grip)											
TBM4-45K-OS	ML4447/49	45,000 lb	28 lb	3.50	6.25	125	12.50	2.75	2.75	1.31	1.50
TBM4-45K-OS*	13329000B	45,000 lb	28 lb	3.50	6.25	125	12.50	2.75	2.75	1.31	1.50
*2,000 ohm bridge											

Performance

- Full Scale Output**
2.00 mV/V
- Combined Error**
±0.05% FS
- Nonlinearity**
±0.05% FS
- Hysteresis**
±0.05%
- Creep**
±0.03% FS in 20 min
- Non-Repeatability**
±0.05% FS
- Zero Balance**
±1% FS

Overload Safe

- 100% FS
- Overload Ultimate**
150% FS

Electrical

- Bridge Resistance**
Input 350 ohms
Output 350 ohms
- Excitation Voltage**
10VDC (15VDC Max)
- Insulation Resistance**
10KM ohms @ 50VDC

Temperature

- Compensated Range**
-10°C to +40°C
- Temperature Operating Range**
-10°C to +40°C
- Effect on Zero Balance**
0.003% FS/deg F
- Effect on FS Output**
0.002% FS/deg F

Mechanical

- Material**
Stainless Steel
- Finish**
Polished
- Sealing**
NEMA 4

Wiring

- Cable Length & Type**
30 foot, 4 conductor
- Cable Color Code**
+ Excitation.....Green
- Excitation.....Black
+ Output.....White
- Output.....Red
Shield.....Yellow



<https://theloadcelldepot.com>