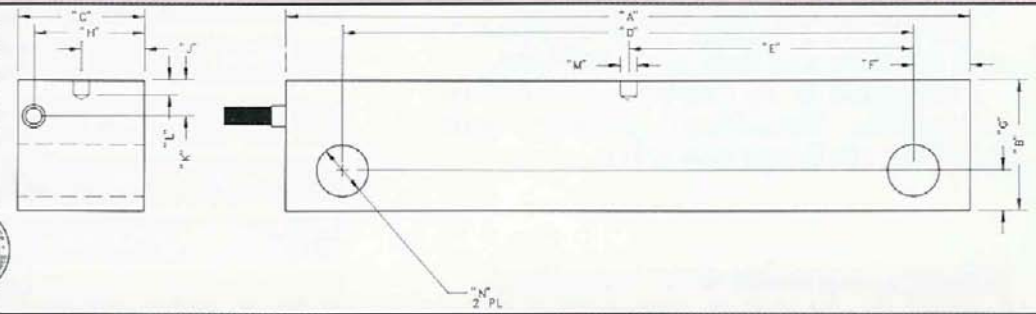
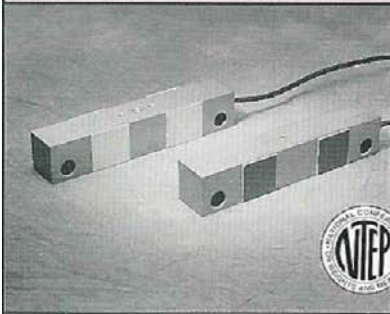


# LC 32 DOUBLE ENDED SHEAR BEAM (STR) Capacities: (lbs) 40,000, 50,000 (t) 18.1, 25

- Direct replacement for Fairbanks Truck Scale Cells



Designed for heavy duty applications in higher capacities. Ideal for use in vehicle weighing applications, large tank or hopper weighing and high capacity platform scales. 700 ohm. NTEP certificate #92-030 10,000d Class III.L

	A	B	C	D	E	F	G	H	I	J	K	L
(inch)	10.5	1.99	1.92	8.74	4.37	.87	.62	1.69	-	.97	.55	.24
(mm)	266	50.7	49	222	111	22	15.7	42.9	-	24.5	13.9	6
	M	N										
(inch)	.25	.79										
(mm)	6.4	20										

## TECHNICAL SPECIFICATIONS

### All Models Unless Otherwise Specified

Rated Output	2 mV/V (3 mV/V for LC 18, LC 26, LC 27 & LC 32)
Excitation Voltage (V)	10 V (max. 15V)
Non-linearity	<0.015% of full scale
Hysteresis	<0.015% of full scale
Combined Error	<0.02% of full scale
Non-repeatability	<0.01% of full scale
Zero Balance	<1% of full scale
Creep (4 hours)	<0.03% of full scale
Insulation Resistance	>5000 MΩ (at 50 VDC)
Terminal Input Resistance	350Ω ±1% (390Ω for LC 10,12,14,16,18) 700Ω for LC 32
Terminal Output Resistance	350Ω ±1% 700Ω ±1% for LC 32
Temperature Effect on Rated Output	<±0.0008%/°F (±0.0014%/°C)
Compensated Range	14°F to 104°F (-10°C to 40°C)
Temperature Effect on Zero Balance	<±0.0013%/°F (±0.0023%/°C)
Compensated Range	14°F to 104°F (-10°C to 40°C)
Safe Overload	150% of full scale
Ultimate Overload	300% of full scale
Rated Accuracy	±0.1%

Note: Specifications subject to change without prior notice.